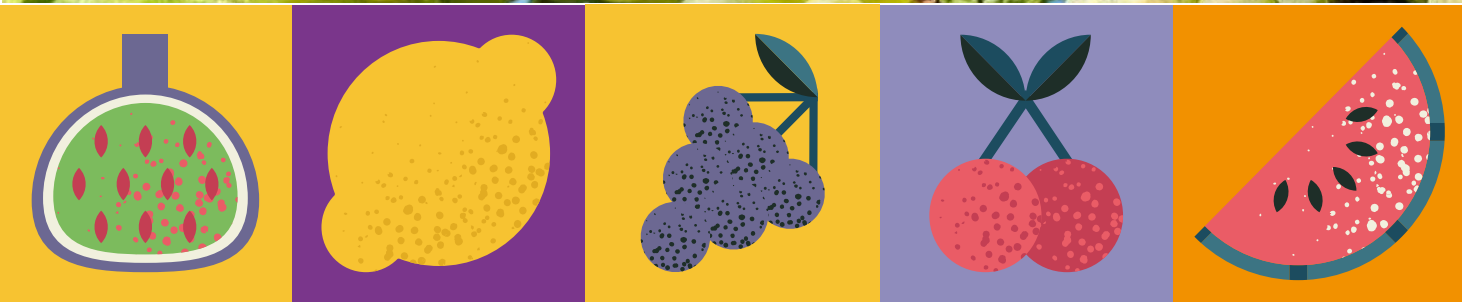




PROTECTOR

for TABLE GRAPE

FORTIFYING, YIELD AND QUALITY



FERTILIZER
CE
IMPORTED FROM EU



PROTECTOR COMPOSITION



COMPOSITION

%w/v

Total Nitrogen (N)	4,8
Ureic Nitrogen (N)	4,8
Zinc water-soluble complex (Zn)	1,0
Manganese water-soluble complex (Mn)	2,0
Copper water-soluble complex (Cu)	2,0

Density: 1,2

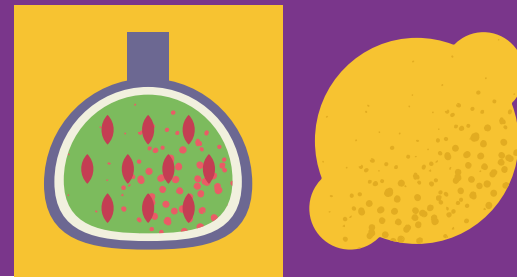
pH: 2,0

Complexing agents:

Aluminium Lignosulphonate
and gluconic acids



PROTECTOR BENEFITS & ADVANTAGES



PRODUCTION



- Increase the number of sprouted buds.
- Uniformity in the sprouting and flowering.
- Improves fruit setting on treated plants. Prevents coulure.

QUALITY



- Good balance between vigour and fruiting
- Uniformity of bunches and more homogeneous maturation.
- Greater yield and higher average weight.

PLANT HEALTH



- Reduces the incidence of wood diseases significantly: Euthypiosis, Petri's disease, Pierce's disease...



PROTECTOR APPLICATION TIMES, MODE AND DOSE



TABLE GRAPE



1st Foliar application: from swollen bud (B2) to green tip (C)

Dose: 5L/Ha

2nd Foliar application: from the time bunches are visible (F) to separate flower buds (H).

Dose: 3L / ha.

3rd Foliar application: from pea-sized seed (K) to the ripening stage (MI)
It is advisable to repeat this application within 7-10 days.

Dose: 3L / Ha

The 3rd application can also be performed via soil.

Dose: 8L / Ha



ASPEAGRO GLOBAL S.L.
(Alicante) Spain

✉ export@aspeagro.com

gm@aspeagro.com

🌐 www.aspeagro.com

PROTECTOR