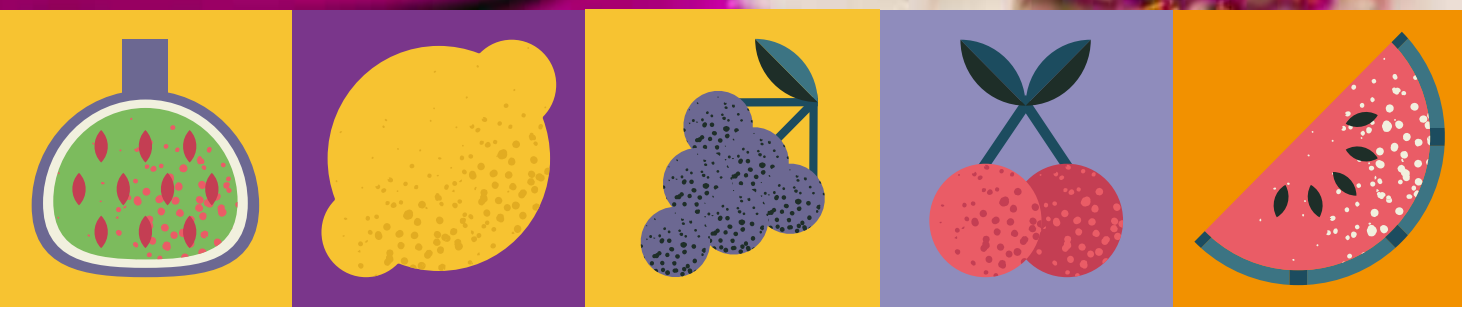




PROTECTOR

for ORNAMENTALS

FORTIFYING, YIELD AND QUALITY



FERTILIZER
CE
IMPORTED
FROM EU



PROTECTOR INTRODUCTION



PROTECTOR can be applied to all kinds of floral and ornamental plants, both herbaceous and woody, annual or perennial.

It is particularly useful in forest plantations, ornamental plant nurseries, meadows and sports fields, in parks and gardens and in outdoor domestic gardening.

As a general rule, we recommend between three and four applications of **PROTECTOR** per crop cycle, at times of greatest vegetative activity or need.



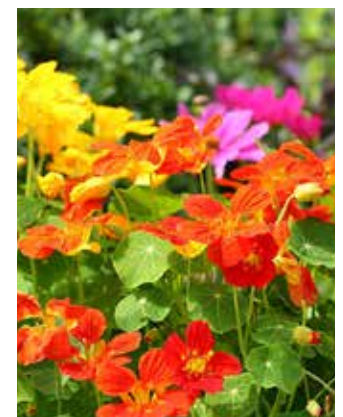
PROTECTOR COMPOSITION



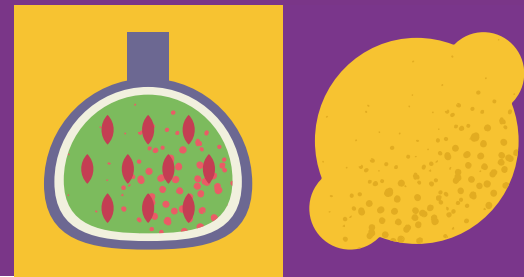
COMPOSITION

%w/v

Total Nitrogen (N)	4,8
Ureic Nitrogen (N)	4,8
Zinc water-soluble complex (Zn)	1,0
Manganese water-soluble complex (Mn)	2,0
Copper water-soluble complex (Cu)	2,0
Density: 1,2	
pH: 2,0	
Complexing agents: Aluminium Lignosulphonate and gluconic acids	



PROTECTOR BENEFITS & ADVANTAGES



YIELD



- Rapidly absorbed due to its system of ascending and descending towards all the organs of the plant, providing an important nucleus of elements and micronutrients of ultra-rapid uptake to activate and strengthen the plant at its most critical phases of growth.
- In new plantations of trees and shrubs: prevents drying of buds and wood, and the subsequent death of the tree due to the low volume of roots and limited storage of plant nutrients.

QUALITY



- Stronger plants that are more resistant to cold.
- Hail: Quick healing of the wounds.

PLANT HEALTH



- PROTECTOR is particularly suitable for promoting the health and development of vegetation and roots in complex situations.
- Activates plant's defences in situations of stress, frost, drought, hail, water logging and disease.
- In arboreal plants with an attack of Phytophthora: treat before the winter stop. In addition, reserves are accumulated for the next budding.

PROTECTOR APPLICATION TIMES, MODE AND DOSE



ORNAMENTALS



APPLICATION

1st foliar application: 10-15 days after sprouting.

2nd foliar application: 30-40 days after the 1st treatment or prior to flowering, depending on the species.

3rd foliar application: 30 days after the 2nd treatment or before the “summer stop”.

4th foliar application: Recommended for woody or rare plants at the start of autumn and before the fall of leaves.

DOSE

0,3% (3 cc/L)

0,3% (3 cc/L)

0,3% (3 cc/L)

0,3% (3 cc/L)



ASPEAGRO GLOBAL S.L.
(Alicante) Spain

✉ export@aspeagro.com

gm@aspeagro.com

🌐 www.aspeagro.com

PROTECTOR