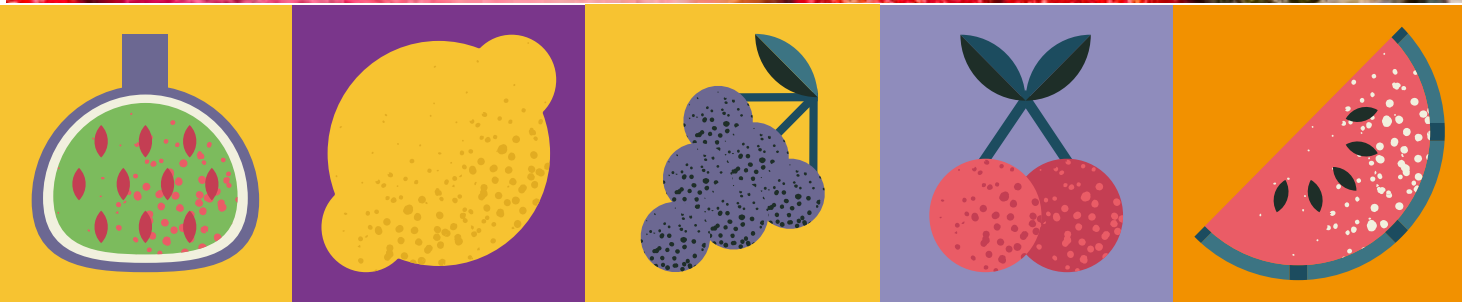




PROTECTOR

for TROPICAL FRUITS
FORTIFYING, YIELD AND QUALITY



FERTILIZER
CE
IMPORTED
FROM EU



PROTECTOR COMPOSITION



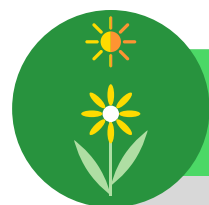
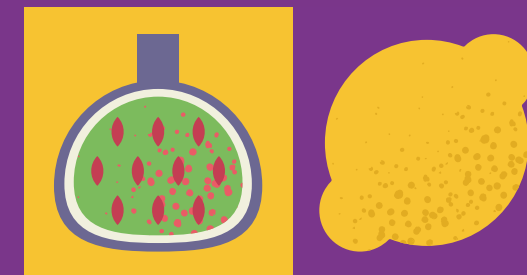
COMPOSITION

%w/v

Total Nitrogen (N)	4,8
Ureic Nitrogen (N)	4,8
Zinc water-soluble complex (Zn)	1,0
Manganese water-soluble complex (Mn)	2,0
Copper water-soluble complex (Cu)	2,0
Density: 1,2	
pH: 2,0	
Complexing agents: Aluminium Lignosulphonate and gluconic acids	



PROTECTOR BENEFITS & ADVANTAGES



SPRING APPLICATION (Essential)

- It helps to overcome the attacks of *Phytophthora* spp.
- It stimulates the budbreaks. Good balance between vegetation (foliar surface) and the number of flowers.
- It prepares the tree to have a good setting.



SUMMER APPLICATION: (Important)

- It boosts the budbreaks for the next year growing period.
- It avoids the weakening due to the young fruits drop.
- It strengthens the skin for prevention of physiological disorders on it: cracking, Olleocellosis, etc.

YIELD

- It advances the growth.
- It improves the rooting.
- More protected plants before fungus attacks.
- It improves sapling/graft affinity.



AUTUMN APPLICATION: (Very important)

- It helps to overcome *Phytophthora* spp. attacks.
- Stronger stems. It increases the fastening of ripe fruits (it reduces dropping).
- Next year's flowering is regulated, specially in problematic varieties. In the next Spring, we will get a high number of vegetative buds (leaves only), mixed buds and differentiated flowers, and therefore a good number of leaves/ quantity of flowers, essential for a good harvest.
- It prevents the rotting of the stem, avoiding premature defoliation and the drop of fruits before harvest.
It boosts fruit's quality, increasing the content of essential oils, vitamins and antioxidants.
- It enhances the quality of the fruit's skin and the external look.

PROTECTOR APPLICATION TIMES, MODE AND DOSE



TROPICAL FRUITS



FOLIAR APPLICATION

1st foliar application: at the beginning of flowering, in “white bud” or after sprouting, depending on the crop.

2nd foliar application: after setting, before hardening of the pit, or at the beginning of the summer sprouting, depending on the fruit’s variety.

3rd foliar application: in Autumn, at the beginning of the fruit’s color change, or around 45 days before harvest, depending on the crop.

Apply from 2 to 3 L of PROTECTOR / 1000L of water.

Minimal use 4L/Ha with a total volume of 2000L.

Depending on the crop and the development state of the plants, it can be needed a higher quantity of total volume in order to obtain a optimal cover for all the leaves.

Comments

In varieties of avocado tree or others, it can be obtained a regenerator effect in the bark that can overcome *Psoriasis*. Good healing of the wounds produced by hailstorm and mechanical pruning. We advise 1 application with PROTECTOR from 10 to 15 days after pruning, mixing with a specific fungicide.

In case of gummosis or collar rot (*Phytophthora* spp.) apply 5L/Ha mainly in the affected area.



ASPEAGRO GLOBAL S.L.
(Alicante) Spain

✉ export@aspeagro.com

gm@aspeagro.com

🌐 www.aspeagro.com

PROTECTOR

For TROPICAL FRUITS