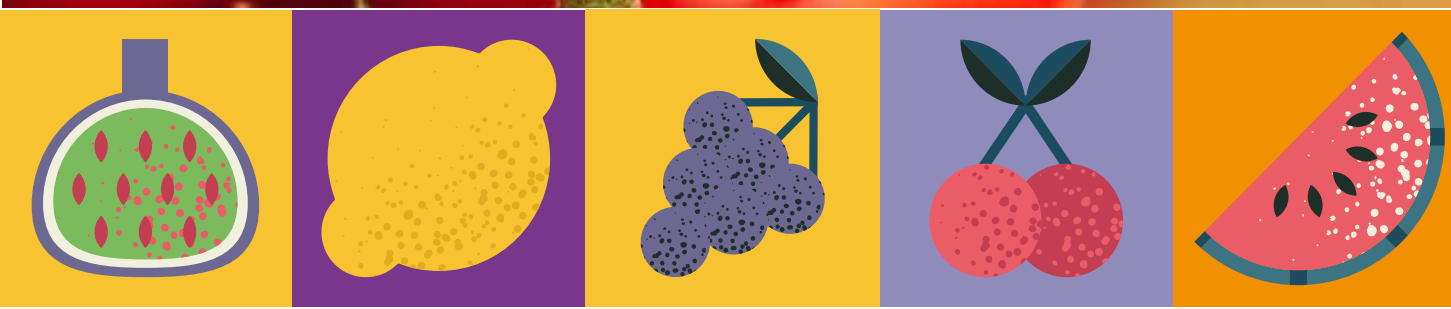




PROTECTOR

for TOMATO FOR PROCESSING
FORTIFYING, YIELD AND QUALITY



FERTILIZER
CE
IMPORTED FROM EU



PROTECTOR COMPOSITION



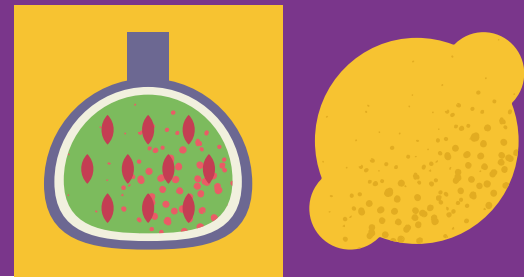
COMPOSITION

%w/v

Total Nitrogen (N)	4,8
Ureic Nitrogen (N)	4,8
Zinc water-soluble complex (Zn)	1,0
Manganese water-soluble complex (Mn)	2,0
Copper water-soluble complex (Cu)	2,0
Density: 1,2	
pH: 2,0	
Complexing agents: Aluminium Lignosulphonate and gluconic acids	



PROTECTOR BENEFITS & ADVANTAGES



PRODUCTION, HEALTH AND QUALITY

1. Increases the content of phenolic compound in plants, thus increasing their self-defence capability against vascular diseases (Phytophthora, Phytium...).
2. Antioxidant effect. Treated plants remain younger for longer, lengthening the vegetative cycle.
3. The first application ensures more vigorous plants, achieving better rooting and definitive establishment.
4. Develops and betters the crop: thus, more buds, improving floral differentiation, fruit setting and as a result increases in production.
5. Earlier harvest.
6. Increases fruit caliber and uniformity.



PROTECTOR APPLICATION TIMES, MODE AND DOSE



TOMATO

FOLIAR APPLICATION

1st foliar application: 20 days after transplanting.

Dose 0,5L - 1L / 100L

2nd foliar application: just before flowering.

Dose 0,5L - 1L / 100L

DRIP IRRIGATION

PROTECTOR can be applied via drip irrigation

Dose 3-5L/Ha

In seedbeds use foliar spraying after the appearance of leaves.

Dose 3 cc per litre of water.





ASPEAGRO GLOBAL S.L.
(Alicante) Spain

✉ export@aspeagro.com

gm@aspeagro.com

🌐 www.aspeagro.com

PROTECTOR